

NEXEDGE®

NX-240/340

NEXEDGE® VHF/UHF Digital & FM Portable Radios

NXDN® FleetSync®



Your business will have to adopt digital radios sooner or later, you know that, but you probably wonder when to make the extra investment. A leap into the unknown? Not with the new NEXEDGE® NX-240/340. It operates in both analog FM and NXDN® digital modes, offering a cost-effective way to migrate smoothly from legacy systems while discovering the benefits of advanced digital technology – including increased effective coverage area, low noise for superior clarity, and inherent secured voice. All this comes in a tough, compact radio that is easy to operate, delivers high-powered audio, and ensures round-the-clock reliability. Don't delay the opportunity to expand the potential of your business.

● NXDN® DIGITAL AIR INTERFACE

NEXEDGE® radios employ NXDN®, an FDMA digital air interface with AMBE+2™ voice coding technology, unique filtering and a 4-level FSK modulation technique with low bit error rate (BER) even at weak RF signal strengths.

● ENHANCED AUDIO QUALITY

AMBE+2™ VOCODER technology accurately replicates natural human speech nuances for superior voice quality, even at highway speeds. Additionally, the powerful 36mm-diameter speaker delivers up to 1 watt audio output, providing undeniably clearer and crisper audio.

● ULTIMATE PERFORMANCE

RF output power is 5W for both VHF (NX-240) and UHF (NX-340). Additionally, the UHF frequency coverage on the NX-340 is 70MHz.

● ERGONOMIC DESIGN

The slim contours and ergonomic design of the NX-240/340 make it comfortable to hold, while the dimples on both sides ensure a firm grip.

● 32 CHANNELS / 2 ZONES

The NX-240/340 can be used with two conventional zones, offering up to 16 channels per zone.

● SWITCHABLE DIGITAL AND ANALOG DUAL MODES

The NX-240/340 is effectively two radios in one – analog and digital – operating on 12.5kHz in analog zones, and on 6.25kHz NXDN® in digital zones. For convenience, a PF key can be used to switch between zones.

● 6.25kHz NXDN® DIGITAL CHANNEL

Digital communications are more spectrum-efficient and offer wider area coverage than analog.

● NXDN® CONVENTIONAL

Compatible with NEXEDGE® Digital Conventional Mode, this radio offers 64 RAN (Radio Access Numbers) and individual & conference group calling to ensure expeditious communications.

● HIGH SECURITY

Confidentiality in radio communications is a KENWOOD priority, and helping to maintain a high level of security in analog mode is a 16-code voice inversion scrambler, while robust NXDN® encryption is available in digital mode.

● GPS CONNECTIVITY

The optional KMC-48GPS Speaker Microphone will enable GPS tracking applications to work with the NX-240/340. GPS data can be transmitted at programmed timing, or upon receiving a request.

● OTHER FEATURES

- DIGITAL:** • Over-The-Air Alias (TX only) • Paging Call
• Individual Call & Conference Group Call • Status Messaging
• Remote Monitor • Site Roaming • Late Entry • NXDN® ESN
- ANALOG:** • FleetSync®, MDC-1200, DTMF • QT/DQT/2-tone
• Comander • Squelch Level
- GENERAL:** • Multiple Scan • 4-Color LED (Blue / Red / Green / Orange) • 2 PF Keys • 16-Position Mechanical Selector
• Zone / Channel Number Voice Announcement • VOX Ready
• Emergency Call • Remote Stun/Kill • Lone Worker Alert (per channel) • Time Out Timer • Busy Channel Lockout
• Low Battery Warning • Battery Saver • KPG-169D Windows® FPU • Wireless Cloning • Password Protection • PTT Release Tone • Minimum Volume • Mic Sense • MIL-STD-810 C/D/E/F/G
• IP54/55 Water & Dust Intrusion

Options

■ **KNB-29N**
1,500mAh/7.2V
Ni-MH Battery Pack



■ **KNB-45L**
2,000mAh/7.4V
Li-Ion Battery Pack



■ **KNB-53N**
1,400mAh/7.2V
Ni-MH Battery Pack



■ **KNB-69L**
2,450mAh/7.4V
Li-Ion Battery Pack



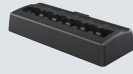
■ **KSC-355**
Rapid Charger
(for KNB-45L/69L)



■ **KSC-43**
Rapid Charger
(for KNB-29N/
45L/53N/69L)



■ **KSC-356**
6 Packet
Multiple Charger
(for KNB-45L/69L)



■ **KRA-22**
VHF Helical Antenna
(Low Profile)



■ **KRA-23**
UHF Helical Antenna
(Low Profile)



■ **KRA-26**
VHF Helical Antenna



■ **KRA-27**
UHF Whip Antenna



■ **KRA-41**
VHF Stubby Antenna



■ **KRA-42**
UHF Stubby Antenna



■ **KMC-48GPS**
GPS Speaker
Microphone



■ **KMC-21**
Compact Speaker
Microphone



■ **KMC-45**
Speaker Microphone



■ **KBH-10**
Belt Clip



All accessories and options may not be available in all markets.
Contact an authorized Kenwood dealer for details and complete list of all accessories and options.

Main Specifications

	NX-240	NX-340
GENERAL		
Frequency Range	136-174 MHz	400-470 MHz [M2] / 450-520 MHz
Number of Channels	32	
Zones	2	
Max. Channels per Zone	16	
Channel Spacing	12.5 kHz 6.25 kHz	
Operating Voltage	7.5V DC ± 20%	
Battery Life	5-5.90 during hi-power battery saver: OFF/ON with KNB-45L OFF/ON with KNB-69L OFF/ON with KNB-53N OFF/ON with KNB-29N	
Operating Temperature Range	-30°C ~ +60°C (-22°F ~ +140°F*)	
Frequency Stability	±2.0ppm	±1.0ppm
Antenna Impedance	50 Ω	
Dimensions (W x H x D)	with KNB-45L, KNB-53N, or KNB-29N 54 x 122 x 35.3 mm with KNB-69L 54 x 122 x 39.4 mm	
Weight (net)	Radio only with KNB-45L with KNB-69L with KNB-53N with KNB-29N 165 g 281 g 296 g 351 g 361 g	

	NX-240	NX-340
RECEIVER		
Sensitivity	Digital Analog (12 dB SINAD)	0.25 μV 0.25 μV
Selectivity	Analog	60 dB
Intermodulation Distortion	Analog	60 dB
Spurious Response	Analog	70 dB
Audio Distortion	Less than 10%	
Audio Output	1 W / 12 Ω (Internal Speaker) 500mW / 8 Ω (External Output)	
TRANSMITTER		
RF Power Output	High / Low	5 W / 1 W
Spurious Response	70 dB	
FM Hum & Noise	Analog	40 dB
Audio Distortion	Less than 10%	
Modulation	11K0F3E, 4K00F1E, 4K00F1D, 4K00F7W, 4K00F2D	

Specifications are subject to change without notice, due to advancements in technology.
Measurements made per TIA/EIA-603 and Specification are typical.

FleetSync® is a registered trademark of JVC KENWOOD Corporation.

Windows® is a registered trademark of Microsoft Corporation in the United States and other countries.

AMBE+2™ is a trademark of Digital Voice Systems Inc.

NXDN® is a registered trademark of JVC KENWOOD Corporation and Icom Inc.

NEXEDGE® is a registered trademark of JVC KENWOOD Corporation.

Applicable MIL-STD & IP

MIL Standard	MIL 810C Methods/Procedures	MIL 810D Methods/Procedures	MIL 810E Methods/Procedures	MIL 810F Methods/Procedures	MIL 810G Methods/Procedures
Low Pressure	500.1/Procedure I	500.2/Procedure I, II	500.3/Procedure I, II	500.4/Procedure I, II	500.5/Procedure I, II
High Temperature	501.1/Procedure I, II	501.2/Procedure I, II	501.3/Procedure I, II	501.4/Procedure I, II	501.5/Procedure I, II
Low Temperature	502.1/Procedure I	502.2/Procedure I, II	502.3/Procedure I, II	502.4/Procedure I, II	502.5/Procedure I, II
Temperature Shock	503.1/Procedure I	503.2/Procedure I	503.3/Procedure I	503.4/Procedure I, II	503.5/Procedure I
Solar Radiation	505.1/Procedure I	505.2/Procedure I	505.3/Procedure I	505.4/Procedure I	505.5/Procedure I
Rain	506.1/Procedure I, II	506.2/Procedure I, II	506.3/Procedure I, II	506.4/Procedure I, III	506.5/Procedure I, III
Humidity	507.1/Procedure I, II	507.2/Procedure II, III	507.3/Procedure II, III	507.4	507.5/Procedure II
Salt Fog	509.1/Procedure I	509.2/Procedure I	509.3/Procedure I	509.4	509.5
Dust	510.1/Procedure I	510.2/Procedure I	510.3/Procedure I	510.4/Procedure I, III	510.5/Procedure I
Vibration	514.2/Procedure VIII, X	514.3/Procedure I	514.4/Procedure I	514.5/Procedure I	514.6/Procedure I
Shock	516.2/Procedure I, II, V	516.3/Procedure I, IV	516.4/Procedure I, IV	516.5/Procedure I, IV	516.6/Procedure I, IV
International Protection Standard					
Dust & Water Protection	IP54/55*				

*To meet MIL-810 and IP grade, the 2-pin connector has to be connected.

ACCESSORIES INCLUDED

- KBH-10 Belt Clip
- Channel Stopper
- KNB-53N Ni-MH Battery Pack*
- KSC-43 Rapid Charger*

*NX-240M/NX-340M3 only

JVC KENWOOD Corporation

Communications Equipment Division

1-16-2 Hakusan, Midori-ku, Yokohama-shi, Kanagawa, 226-8525 Japan

www.jvckenwood.co.jp/en

http://nexedge.kenwood.com



ISO9001 Registered
Communications Equipment Division
Professional Systems Business Group
JVC KENWOOD Corporation